



# MONTHLY MEMBERSHIP PROGRESS REPORT

District 13 OH1

Results as of: 11/30/2017

GMT: CINDY GREGG

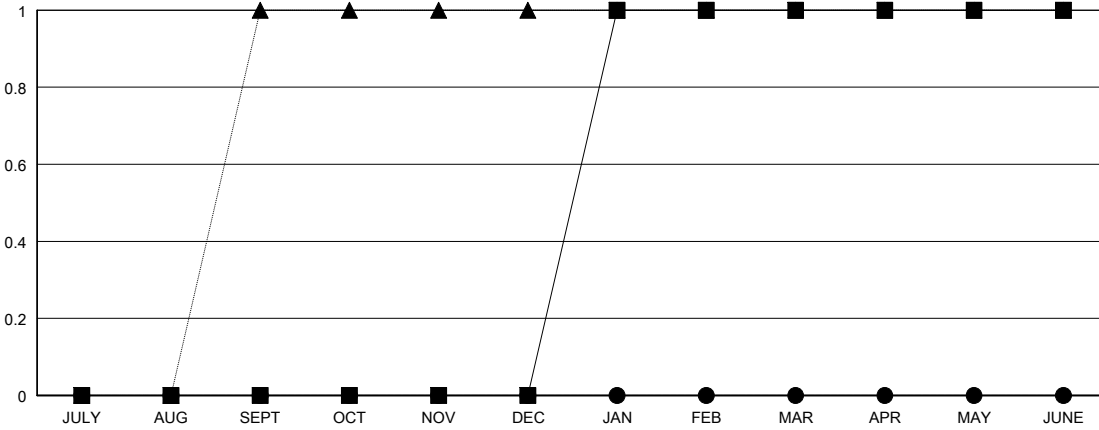
LOCATION OHIO

GMT CA

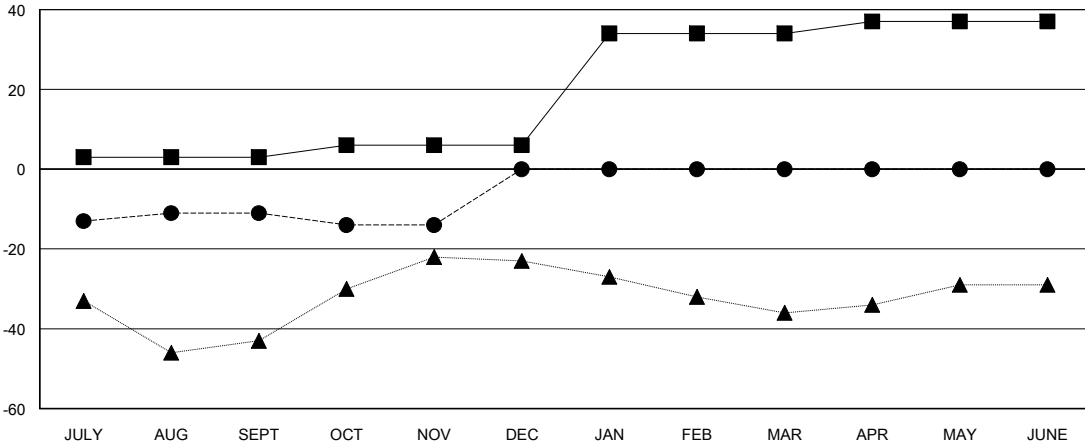
Clubs			
RESULTS FOR 2017-2018			
QUARTER	NEW CLUB GOAL	NEW CLUBS	DROPPED CLUBS
JULY/AUG/SEPT	0	0	0
OCT/NOV/DEC	0	0	0
JAN/FEB/MAR	1	0	0
APR/MAY/JUNE	0	0	0

Members			
RESULTS FOR 2017-2018			
QUARTER	MEMBER GROWTH NET GOAL	MEMBER GROWTH ACTUAL	DROPPED MEMBERS ACTUAL (including transfers)
JULY/AUG/SEPT	3	16	25
OCT/NOV/DEC	3	15	18
JAN/FEB/MAR	28	0	0
APR/MAY/JUNE	3	0	0

GOALS AND ACTUAL NEW CLUBS CUMULATIVE



GOALS AND ACTUAL MEMBERS CUMULATIVE



DROPPED CLUBS: 0
------------------

17 CLUBS OF 59 ADDED 1 OR MORE NEW MEMBERS

GENDER DISTRIBUTION	
MALE	1,357 (79.45%)
FEMALE	351 (20.55%)
Women Percentage Fiscal Year Goal: 27%	

DROPPED MEMBERS	
DECEASED	12
CLUB CANCELLED	0
OTHER	31
<b>TOTAL</b>	<b>43</b>

[CLICK HERE FOR CUMULATIVE MEMBERSHIP DATA](#)

TOTAL FAMILY UNIT MEMBERS	270
FAMILY MEMBERS PAYING HALF DUES	138